

**Comune di Sansepolcro**  
Provincia di Arezzo

PROGETTISTI PER RISPETTIVE COMPETENZE  
Architetto Pier Luigi Cestelli  
Geometra Sergio Pecorari  
52037 SANSEPOLCRO (AR) Via N. Aggunti n.12  
TEL. 0575 735192



PIANO DI LOTTIZZAZIONE DI INIZIATIVA PRIVATA  
NELLA ZONA C3.2 DEL TREBBIO  
ai sensi degli articoli 65, 67, 68 e 69 della L.R. 01/05.

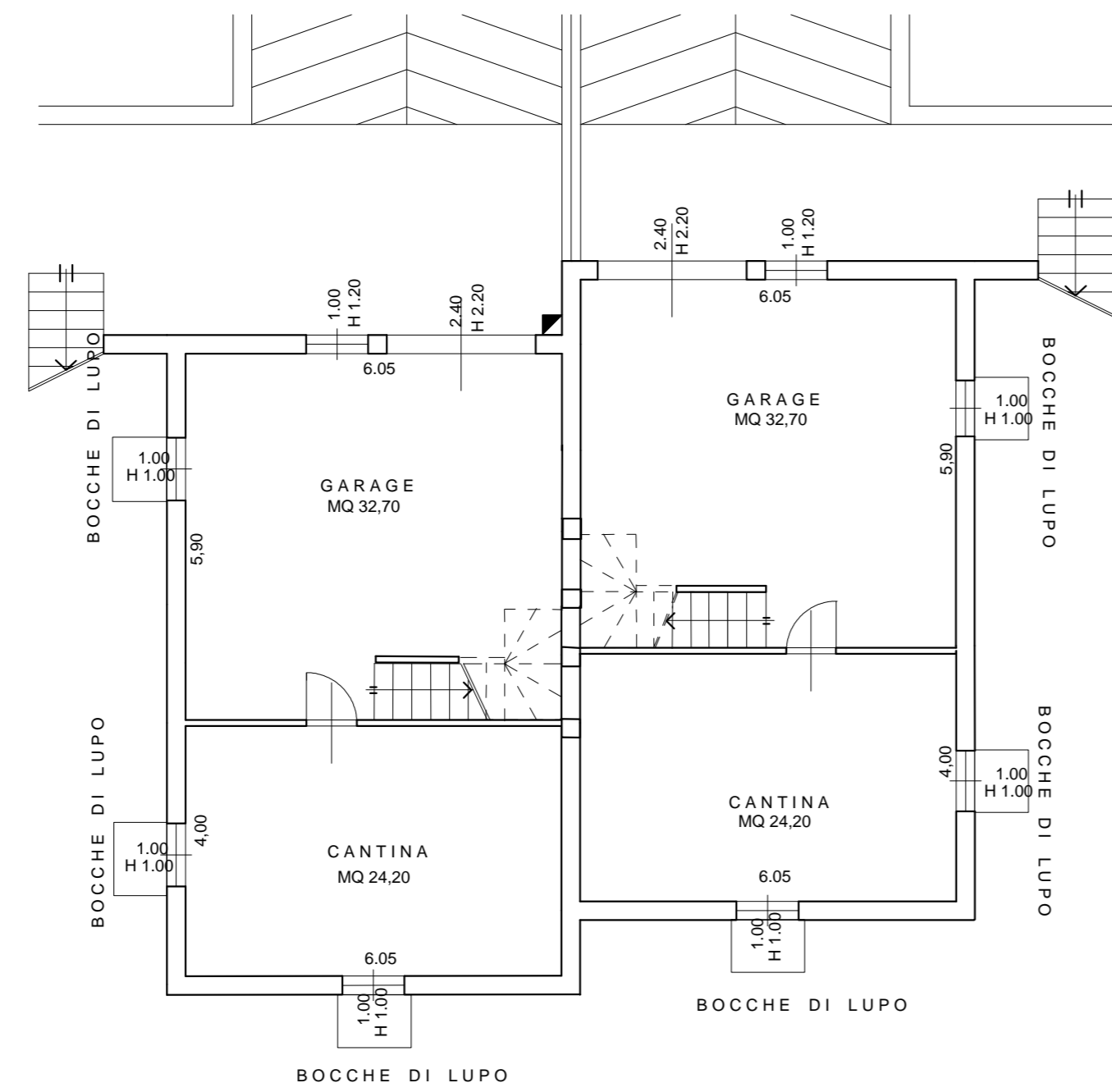
PROPRIETA': GRAL IMMOBILIARE s.r.l., F.LLI Senesi S.r.l. ed Eredi Ovidi

TAVOLA  
**A.7.a**

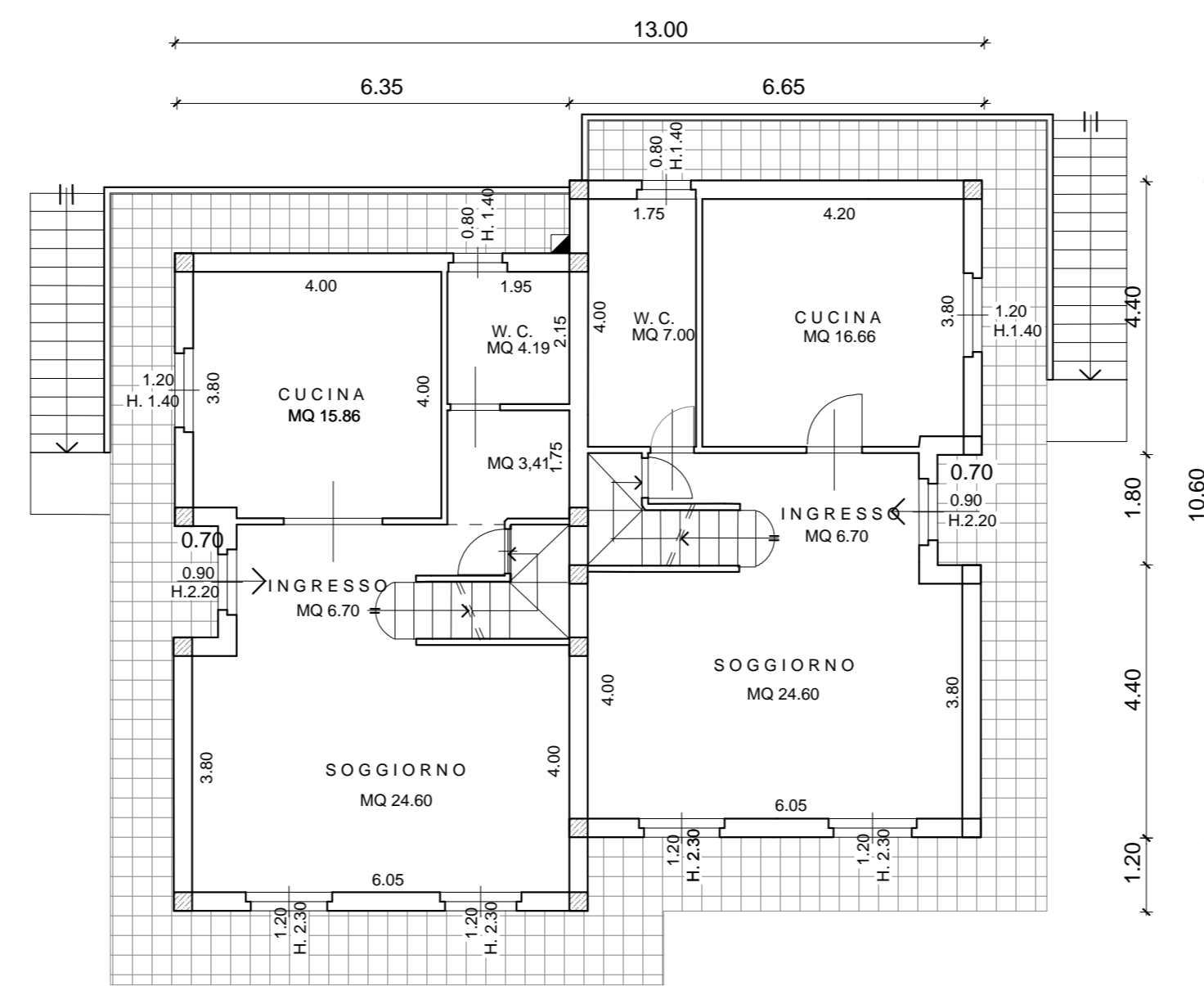
OGGETTO: Tipologia Edilizia A

DATA	SCALA	AGGIORNAMENTI:
11/09	1:100	06/10 - 01/13

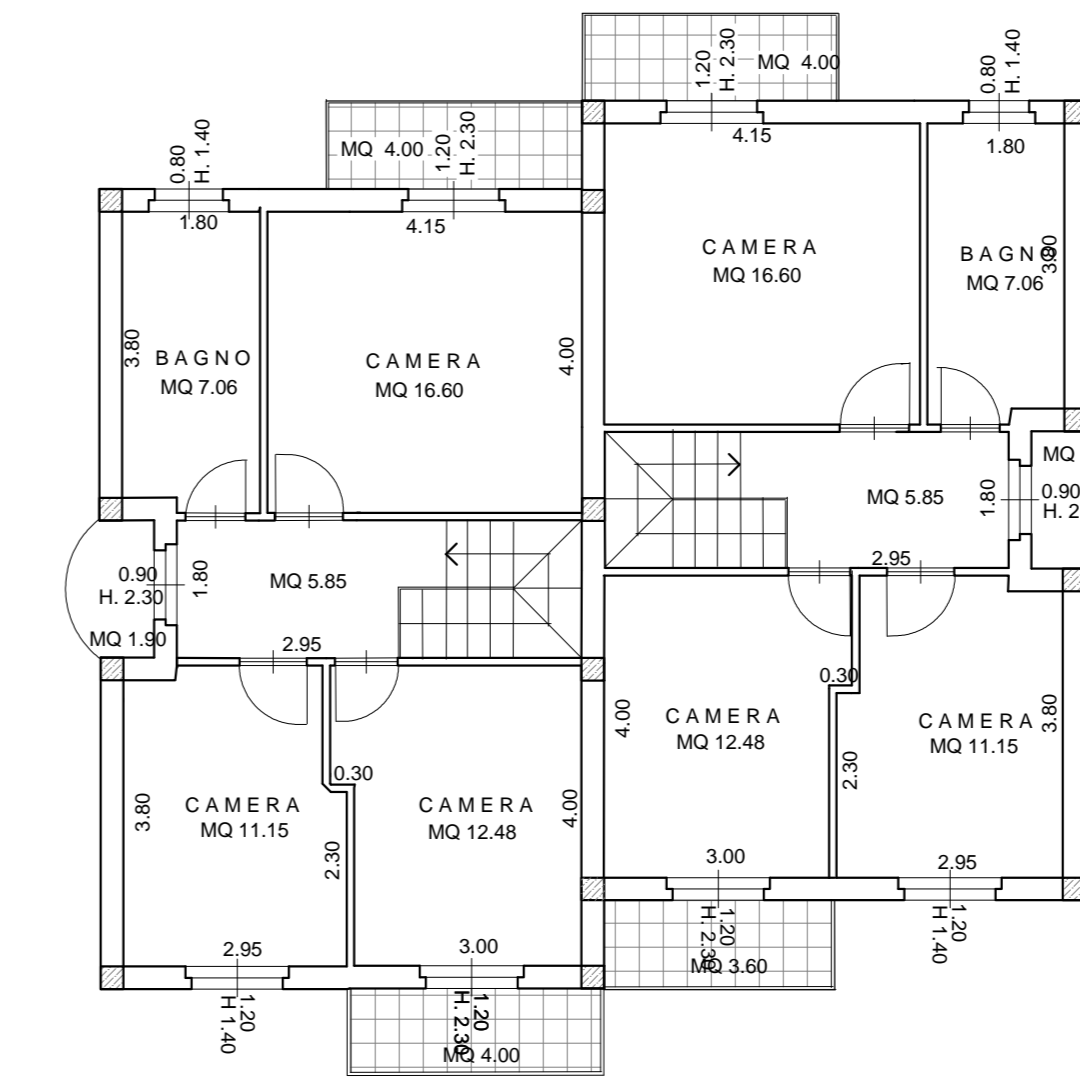
PIANTA PIANO SEMINTERRATO



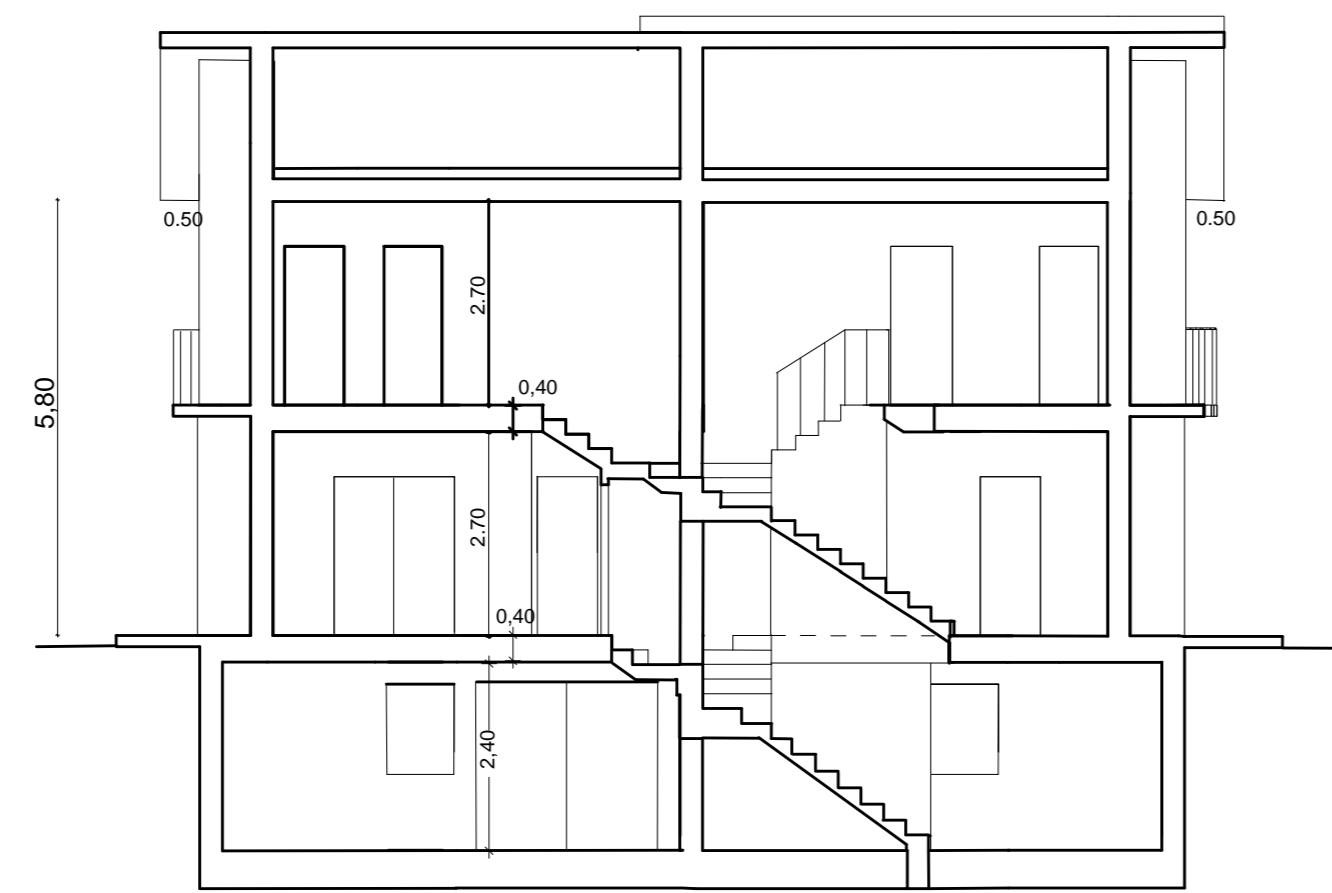
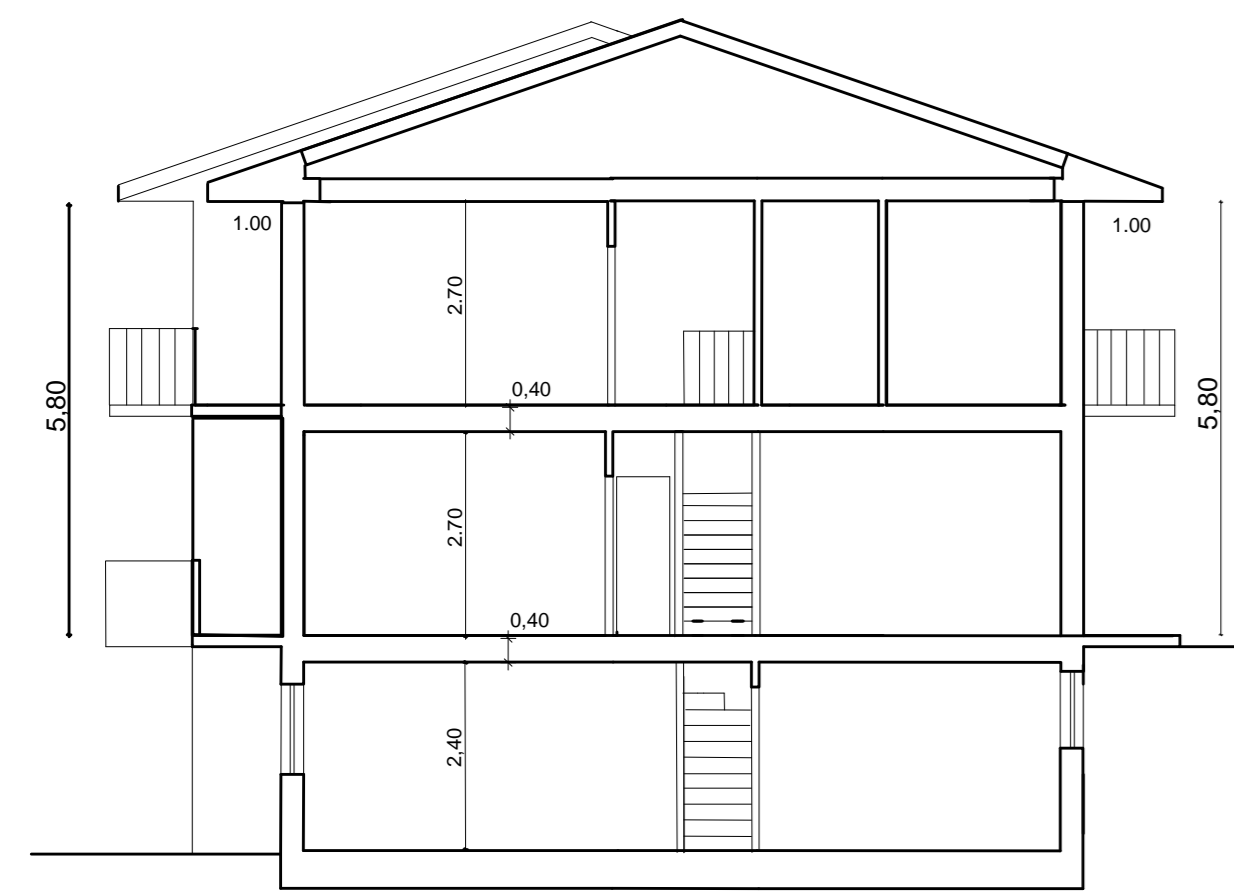
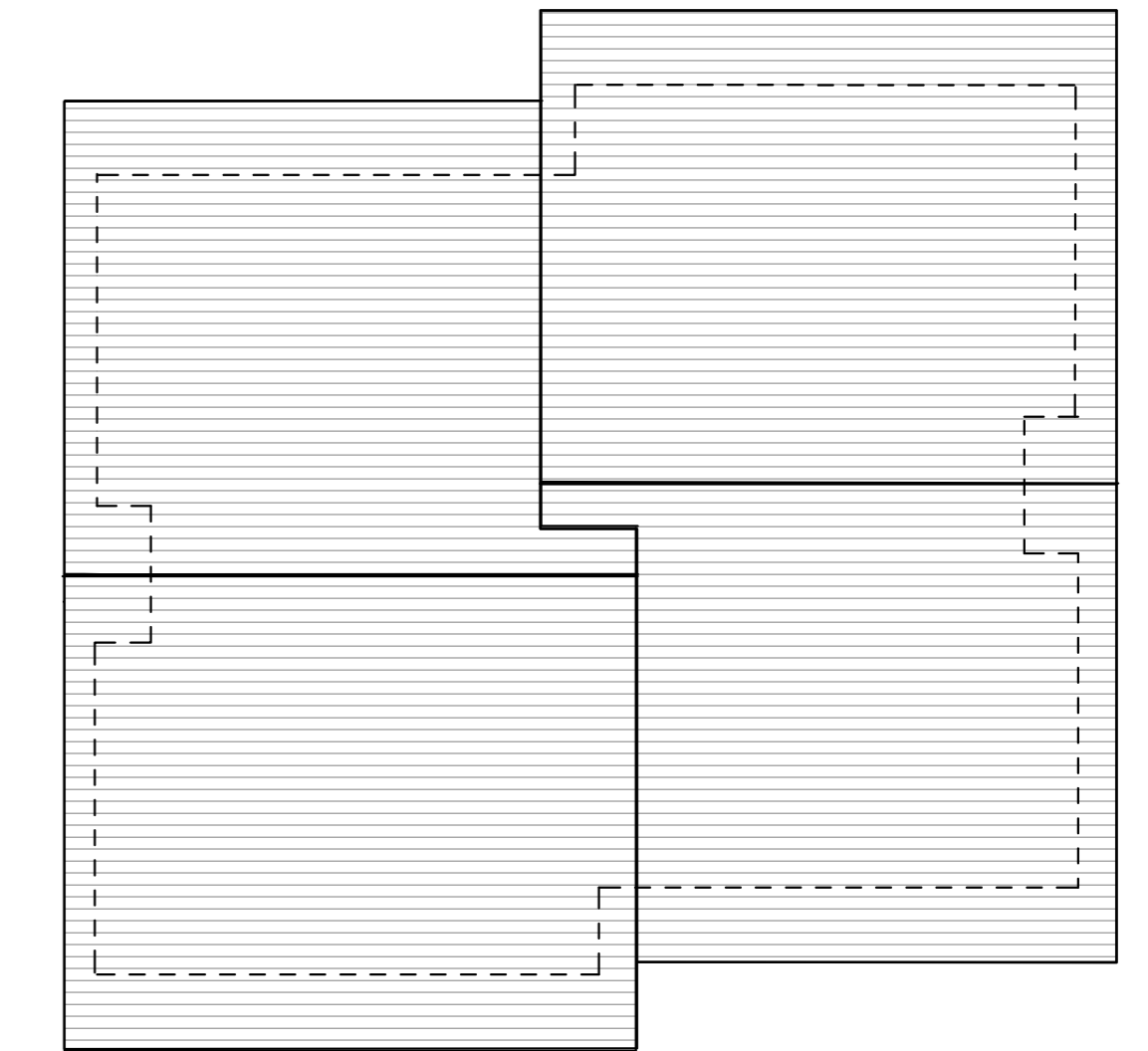
PIANTA PIANO TERRA



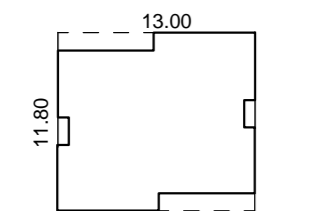
PIANTA PIANO PRIMO



PIANTA COPERTURE

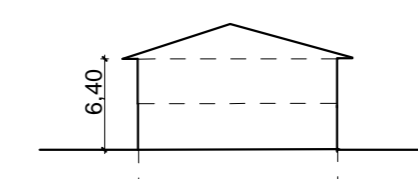
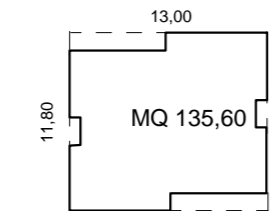


**CALCOLO  
SUPERFICIE COPERTA**



ML 11,80 X ML 13,00 = MQ 153,40  
RISEGHE DA TOGLIERE  
ML 0,36 X ML 1,20 = MQ 0,43  
ML 0,36 X ML 1,20 = MQ 0,43  
ML 1,80 X ML 0,70 = MQ 1,26  
MQ = 153,40 - RISEGHE = MQ 135,60  
MQ 135,60 SUP. COPERTA

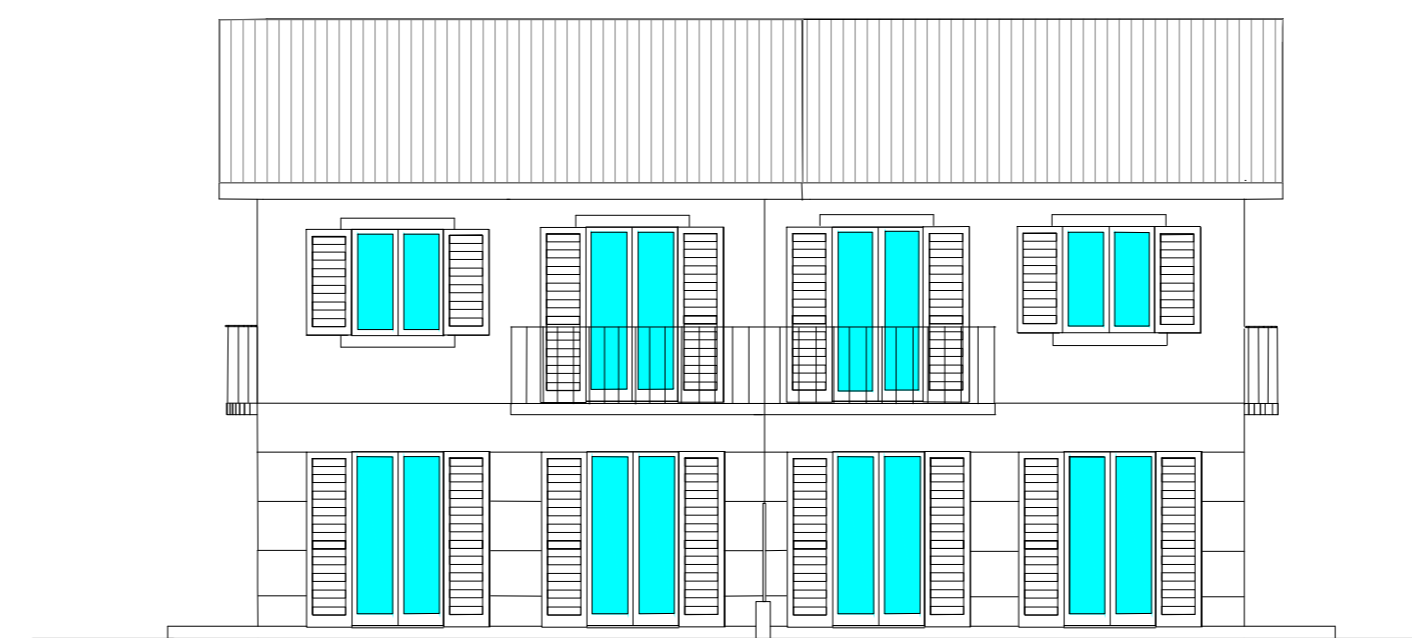
**CALCOLO  
VOLUMI**



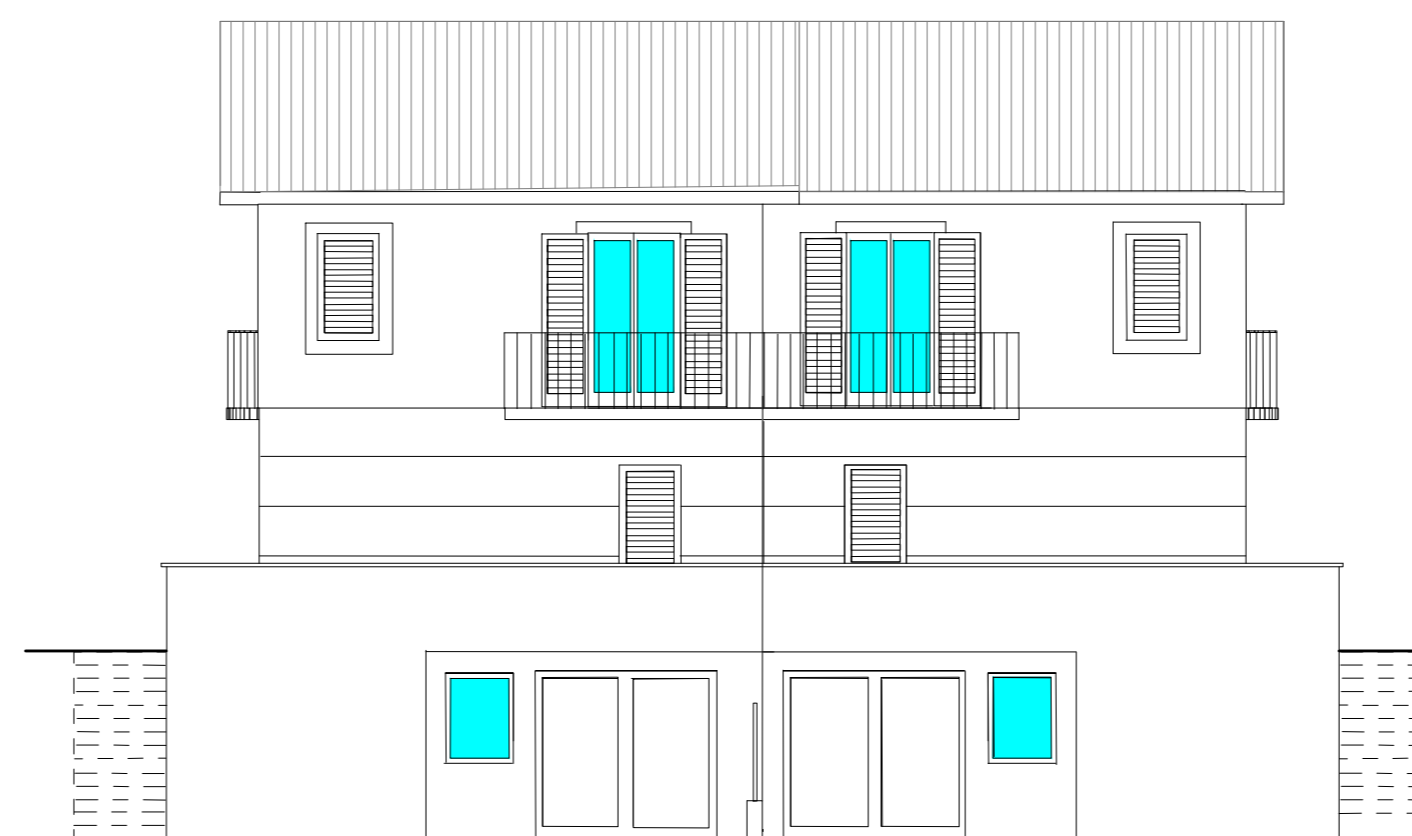
**SEZIONE**

SUP. COP. MQ 135,60 X H 6,40 = MC 867,84  
MC 868,00 VOLUME

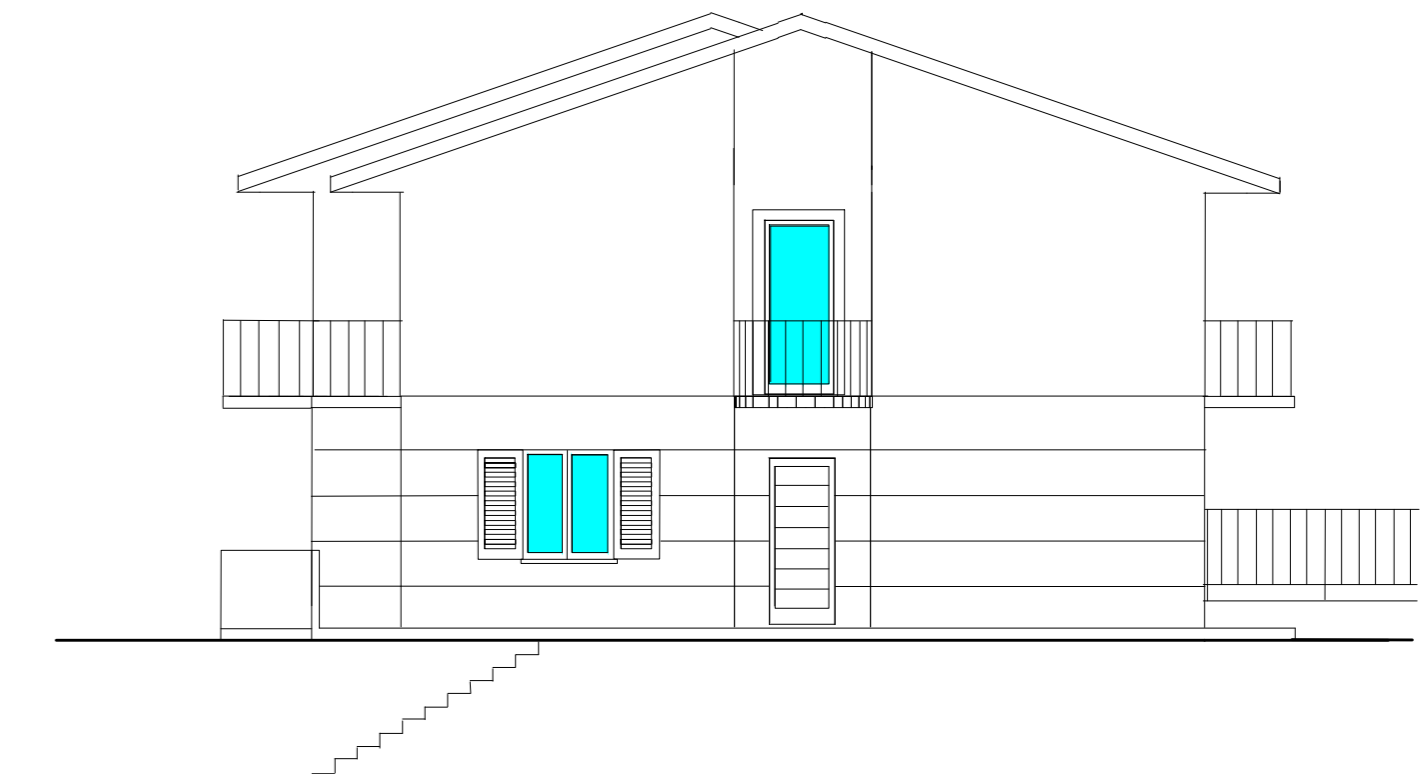
PROSPETTO ANTERIORE



PROSPETTO POSTERIORE



PROSPETTO LATERALE SINISTRO



PROSPETTO LATERALE DESTRO

